

The Great Grid Upgrade

Sea Link

Sea Link

Volume 9: Examination Submissions

Document 9.76.5.8: Change Request Appendix H Tree Constraints Plans Suffolk Onshore Scheme

Planning Inspectorate Reference: EN020026

**Version: B
March 2026**

nationalgrid

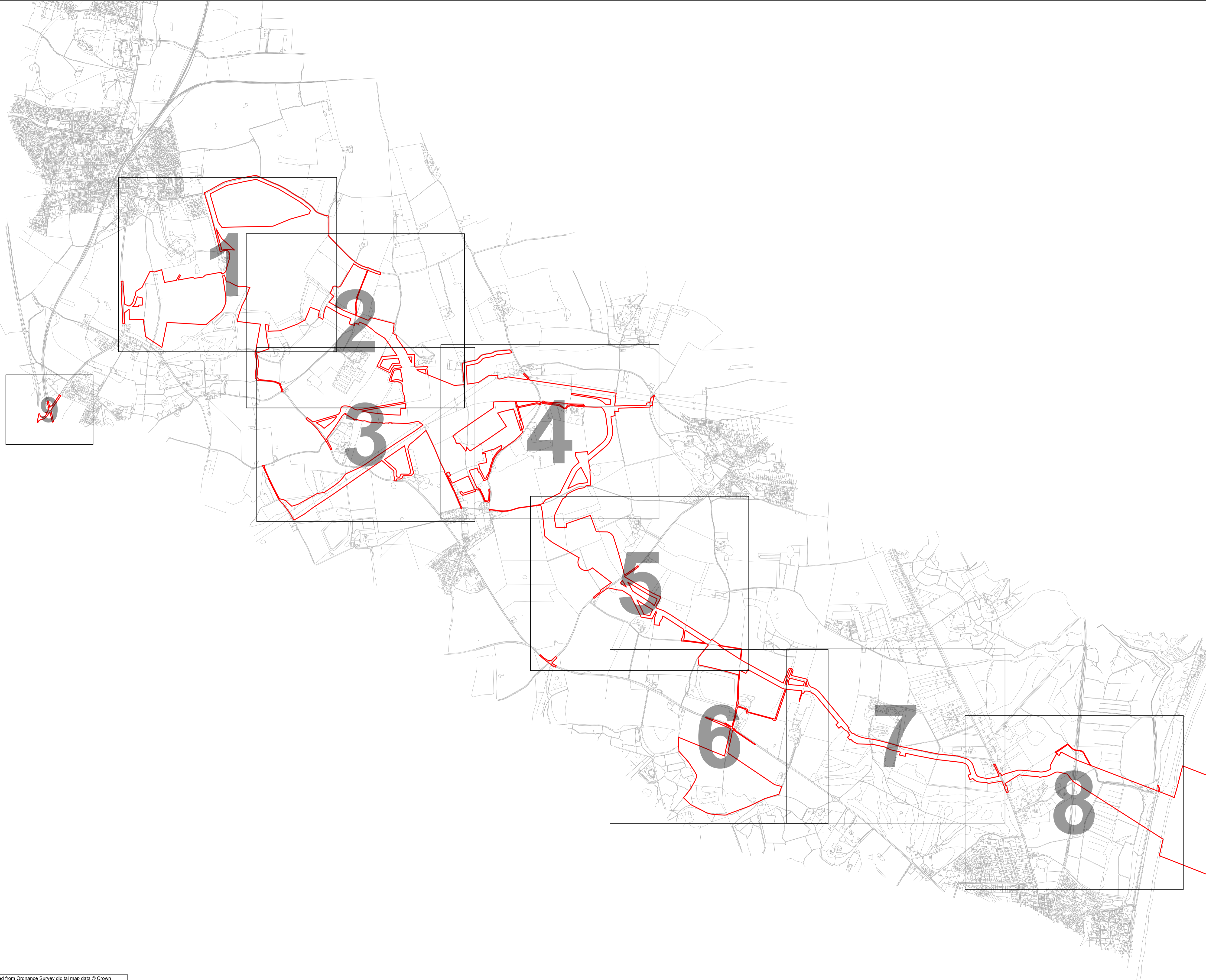
Page intentionally blank

Contents

- Tree Plans Suffolk Site (Sheet 00)
- Tree Plans Suffolk Site (Sheet 01)
- Tree Plans Suffolk Site (Sheet 02)
- Tree Plans Suffolk Site (Sheet 03)
- Tree Plans Suffolk Site (Sheet 04)
- Tree Plans Suffolk Site (Sheet 05)
- Tree Plans Suffolk Site (Sheet 06)
- Tree Plans Suffolk Site (Sheet 07)
- Tree Plans Suffolk Site (Sheet 08)
- Tree Plans Suffolk Site (Sheet 09)

Version History

Date	Version	Status	Description / Changes
November 2025	A	Final	For Change Request Submission
March 2026	B	Final	Updated in response to SCC comments, for Deadline 5



AECOM

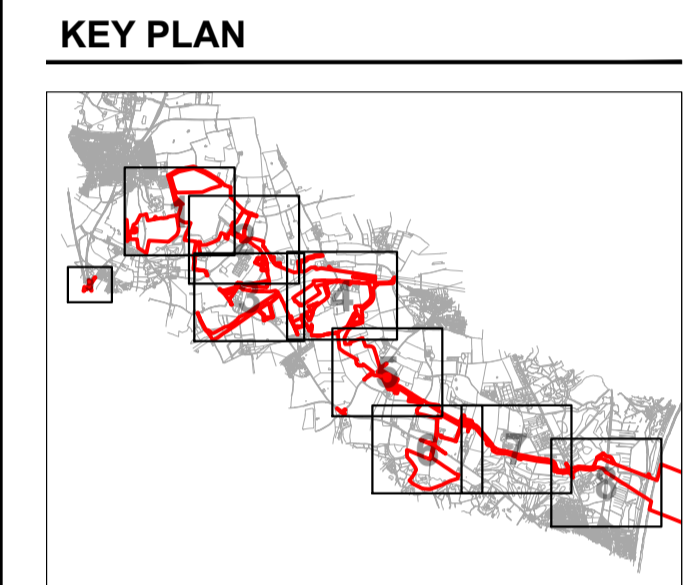
PROJECT
 Sea Link (Suffolk)

CLIENT
 National Grid

CONSULTANT
 AECOM
 Mid Point, Alencon Link,
 Basingstoke, Hants,
 RG21 7PP
 Tel +44 (0) 1256 310 200
 www.aecom.com

GENERAL NOTES

- TREE CATEGORIES AS DEFINED BY BS 5837:2012
- TREE LOCATIONS ARE BASED ON THE OS MAPPING, AERIAL IMAGERY, AND GPS CO-ORDINATES FROM ON SITE WALKOVER.
- * INDICATES A TREE / GROUP WHOSE POSITION IS APPROXIMATE AS BASED UPON AERIAL PHOTOGRAPHY AND ON SITE OBSERVATIONS.
- PLANS SHOULD BE READ IN CONJUNCTION WITH THE AECOM ARBORICULTURAL REPORT.
- THE ORIGINAL OF THIS DRAWING WAS PRODUCED IN COLOUR - A MONOCHROME COPY SHOULD NOT BE RELIED UPON.
- DRAWING REFERENCES:
 LPA Searches.dwg
 OSIM_Lines.dwg
 RevC_Draft_Order_Limits.dwg



- KEY**
- ORDER LIMITS
 - A CATEGORY TREE, GROUP, HEDGE, OR WOODLAND (HIGH QUALITY & VALUE)
 - B CATEGORY TREE, GROUP, HEDGE, OR WOODLAND (MODERATE QUALITY & VALUE)
 - C CATEGORY TREE, GROUP, HEDGE, OR WOODLAND (LOW QUALITY & VALUE)
 - U CATEGORY TREE, GROUP, HEDGE, OR WOODLAND (UNSUITABLE FOR RETENTION)
 - ROOT PROTECTION AREAS (RPA) (AS DEFINED BY BS 5837:2012)
 - VETERAN TREE MARKER (INDICATES POSITION OF TREE OF VETERAN STATUS)
 - ANCIENT TREE MARKER (INDICATES POSITION OF TREE OF ANCIENT STATUS)
 - ANCIENT WOODLAND (W/15m BUFFER ZONE) (AREA CLASSIFIED AS AN ANCIENT WOODLAND)
 - PRIORITY HABITAT (CONSIDERED AN AREA OF PRIORITY HABITAT)
 - SSSI AREA (AREA CONTAINING SITE OF SPECIAL SCIENTIFIC INTEREST)
 - NATURE RESERVE (AREA CLASSIFIED AS A LOCAL OR NATIONAL NATURE RESERVE)
 - TREE PRESERVATION ORDER (AREA COVERED BY A TREE PRESERVATION ORDER (TPO))

ISSUE/REVISION

NO	DATE	DESCRIPTION
A V3	13.02.26	REVISION A (VERSION 3 CHANGE REQUEST)
A V2	14.11.25	REVISION A (VERSION 2 CHANGE REQUEST)
P05	08.01.25	TREE FEATURE AMENDMENTS
P04	12.12.24	SECOND ISSUE
P03	22.11.24	UPDATED RLB
P02	30.10.24	SURVEY UPDATE
P01	16.08.24	FIRST ISSUE

DRAWING STATUS

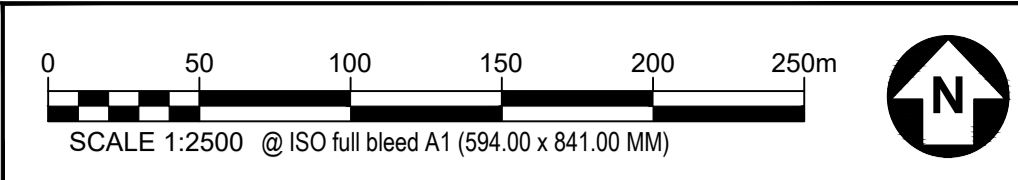
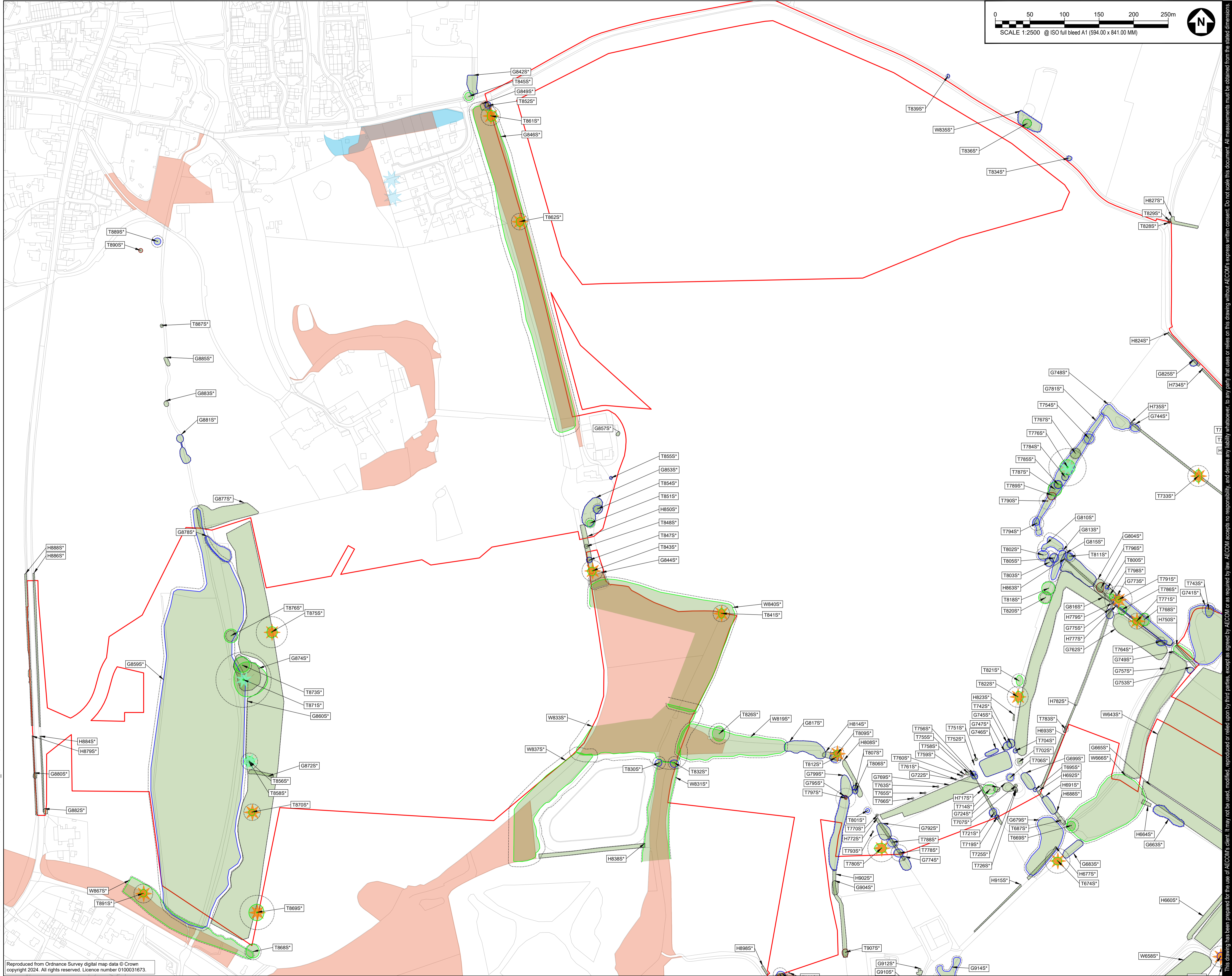
ISSUE

PROJECT NUMBER
 60664038

SHEET TITLE
 TREE PLANS
 SUFFOLK SITE
 (SHEET 00)

SHEET NUMBER **REV.**
 60664038-ACM-XX-SK-AB-TCP-000 A VER 3

This drawing has been prepared for the use of AECOM's client. It may not be used, modified, reproduced, or relied upon by third parties, except as agreed by AECOM or as required by law. AECOM accepts no responsibility, and denies any liability whatsoever, to any party that uses or relies on this drawing without AECOM's express written consent. Do not scale this document. All measurements must be obtained from the stated dimensions.



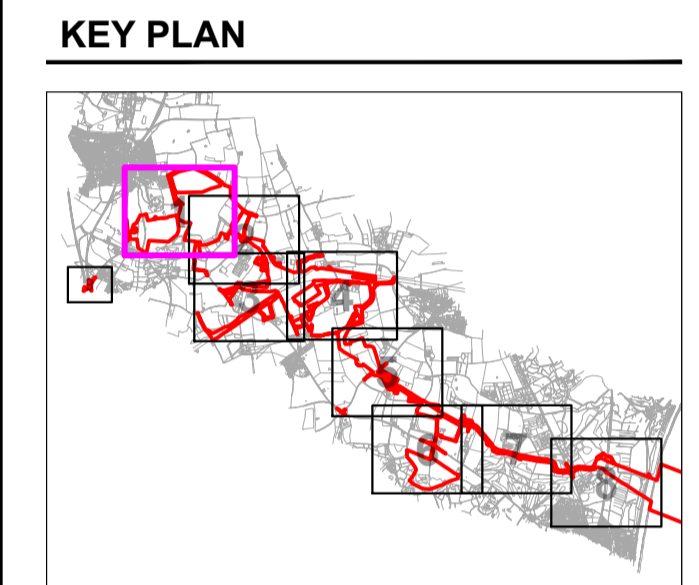
PROJECT
Sea Link (Suffolk)

CLIENT
National Grid

CONSULTANT
AECOM
Mid Point, Alencon Link,
Basingstoke, Hants,
RG21 7PP
Tel +44 (0) 1256 310 200
www.aecom.com

GENERAL NOTES

1. TREE CATEGORIES AS DEFINED BY BS 5837:2012
2. TREE LOCATIONS ARE BASED ON THE OS MAPPING, AERIAL IMAGERY, AND GPS CO-ORDINATES FROM ON SITE WALKOVER.
3. * INDICATES A TREE / GROUP WHOSE POSITION IS APPROXIMATE AS BASED UPON AERIAL PHOTOGRAPHY AND ON SITE OBSERVATIONS. ARBORICULTURAL REPORT.
4. PLANS SHOULD BE READ IN CONJUNCTION WITH THE AECOM ARBORICULTURAL REPORT.
5. THE ORIGINAL OF THIS DRAWING WAS PRODUCED IN COLOUR - A MONOCHROME COPY SHOULD NOT BE RELIED UPON.
6. DRAWING REFERENCES:
LPA Searches.dwg
OSIM Lines.dwg
RevC_Draft_Order_Limits.dwg



- KEY**
- ORDER LIMITS (HIGH QUALITY & VALUE)
 - A CATEGORY TREE, GROUP, HEDGE, OR WOODLAND (MODERATE QUALITY & VALUE)
 - B CATEGORY TREE, GROUP, HEDGE, OR WOODLAND (LOW QUALITY & VALUE)
 - C CATEGORY TREE, GROUP, HEDGE, OR WOODLAND (UNSUITABLE FOR RETENTION)
 - U CATEGORY TREE, GROUP, HEDGE, OR WOODLAND (AS DEFINED BY BS 5837:2012)
 - ROOT PROTECTION AREAS (RPA)
 - VETERAN TREE MARKER (INDICATES POSITION OF TREE OF VETERAN STATUS)
 - ANCIENT TREE MARKER (INDICATES POSITION OF TREE OF ANCIENT STATUS)
 - ANCIENT WOODLAND (W/15m BUFFER ZONE) (CONSIDERED AN AREA OF PRIORITY HABITAT)
 - PRIORITY HABITAT (CONSIDERED AN AREA OF PRIORITY HABITAT)
 - SSSI AREA (AREAS CONTAINING SITES OF SPECIAL SCIENTIFIC INTEREST)
 - NATURE RESERVE (AREA CLASSIFIED AS A LOCAL OR NATIONAL NATURE RESERVE)
 - TREE PRESERVATION ORDER (AREA COVERED BY A TREE PRESERVATION ORDER (TPO))

ISSUE/REVISION

NO	DATE	DESCRIPTION
A V3	13.02.26	REVISION A (VERSION 3 CHANGE REQUEST)
A V2	14.11.25	REVISION A (VERSION 2 CHANGE REQUEST)
P06	08.01.25	TREE FEATURE AMENDMENTS
P04	12.12.24	SECOND ISSUE
P03	22.11.24	UPDATED RLB
P02	30.10.24	SURVEY UPDATE
P01	16.08.24	FIRST ISSUE
LR	DATE	DESCRIPTION

DRAWING STATUS

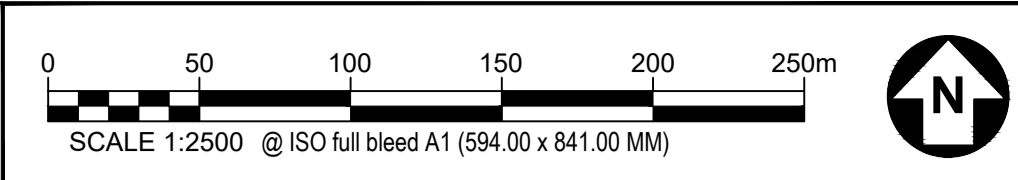
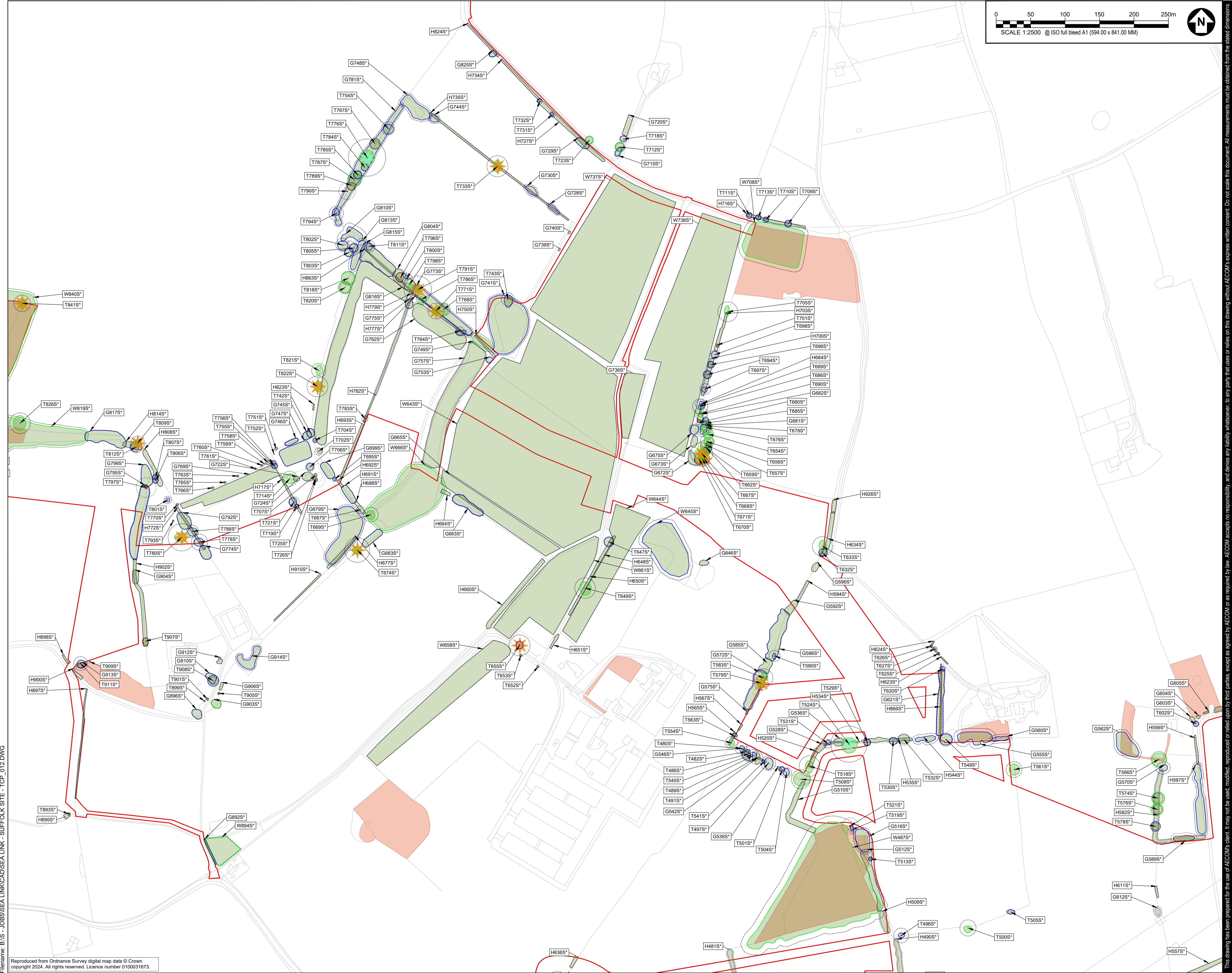
ISSUE

PROJECT NUMBER
60664038

SHEET TITLE
TREE PLANS
SUFFOLK SITE
(SHEET 01)

SHEET NUMBER **REV.**
60664038-ACM-XX-SK-AB-TCP-001 A VER 3

This drawing has been prepared for the use of AECOM's client. It may not be used, modified, reproduced or relied upon by third parties, except as agreed by AECOM or as required by law. AECOM accepts no responsibility, and denies any liability whatsoever, to any party that uses or relies on this drawing without AECOM's express written consent. Do not scale this document. All measurements must be obtained from the stated dimensions.



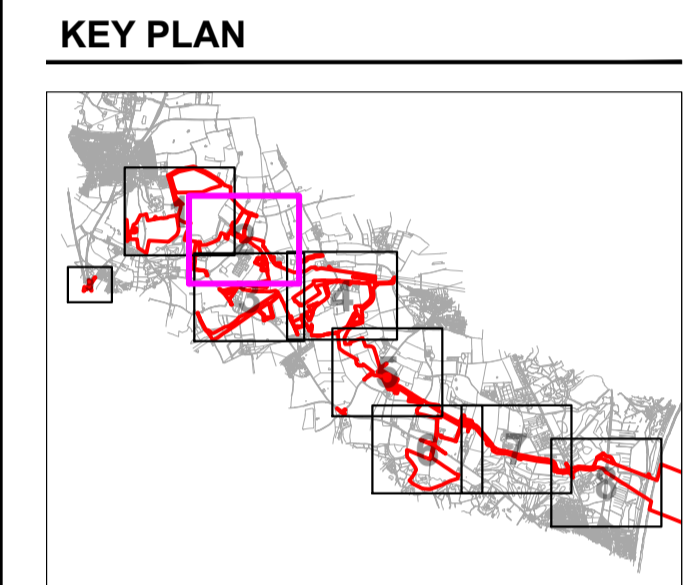
PROJECT
Sea Link (Suffolk)

CLIENT
National Grid

CONSULTANT
AECOM
Mid Point, Alencon Link,
Basingstoke, Hants,
RG21 7PP
Tel +44 (0) 1256 310 200
www.aecom.com

GENERAL NOTES

1. TREE CATEGORIES AS DEFINED BY BS 5837:2012
2. TREE LOCATIONS ARE BASED ON THE OS MAPPING, AERIAL IMAGERY, AND GPS CO-ORDINATES FROM ON SITE WALKOVER.
3. * INDICATES A TREE / GROUP WHOSE POSITION IS APPROXIMATE AS BASED UPON AERIAL PHOTOGRAPHY AND ON SITE OBSERVATIONS. ARBOCULTURAL REPORT.
4. PLANS SHOULD BE READ IN CONJUNCTION WITH THE AECOM ARBOCULTURAL REPORT.
5. THE ORIGINAL OF THIS DRAWING WAS PRODUCED IN COLOUR - A MONOCHROME COPY SHOULD NOT BE RELIED UPON.
6. DRAWING REFERENCES:
LPA Searches.dwg
OSIM Lines.dwg
Rev.C_Draft_Order_Limits.dwg



KEY

- ORDER LIMITS
- A CATEGORY TREE, GROUP, HEDGE, OR WOODLAND (HIGH QUALITY & VALUE)
- B CATEGORY TREE, GROUP, HEDGE, OR WOODLAND (MODERATE QUALITY & VALUE)
- C CATEGORY TREE, GROUP, HEDGE, OR WOODLAND (LOW QUALITY & VALUE)
- U CATEGORY TREE, GROUP, HEDGE, OR WOODLAND (UNSUITABLE FOR RETENTION)
- ROOT PROTECTION AREA (RPA) (AS DEFINED BY BS 5837:2012)
- VETERAN TREE MARKER (INDICATES POSITION OF VETERAN STATUS)
- ANCIENT TREE MARKER (INDICATES POSITION OF TREE OF ANCIENT STATUS)
- ANCIENT WOODLAND (W/15m BUFFER ZONE) (CONSIDERED AN AREA OF PRIORITY HABITAT)
- PRIORITY HABITAT (CONSIDERED AN AREA OF PRIORITY HABITAT)
- SSSI AREA (AREA CONTAINING SITE OF SPECIAL SCIENTIFIC INTEREST)
- NATURE RESERVE (AREA CLASSIFIED AS A LOCAL OR NATIONAL NATURE RESERVE)
- TREE PRESERVATION ORDER (AREA COVERED BY A TREE PRESERVATION ORDER (TPO))

ISSUE/REVISION

NO	DATE	REVISION
A V3	13.02.26	REVISION A (VERSION 3 CHANGE REQUEST)
A V2	14.11.25	REVISION A (VERSION 2 CHANGE REQUEST)
P06	08.01.25	TREE FEATURE AMENDMENTS
P04	12.12.24	SECOND ISSUE
P03	22.11.24	UPDATED RLB
P02	30.10.24	SURVEY UPDATE
P01	16.08.24	FIRST ISSUE

IR DATE DESCRIPTION

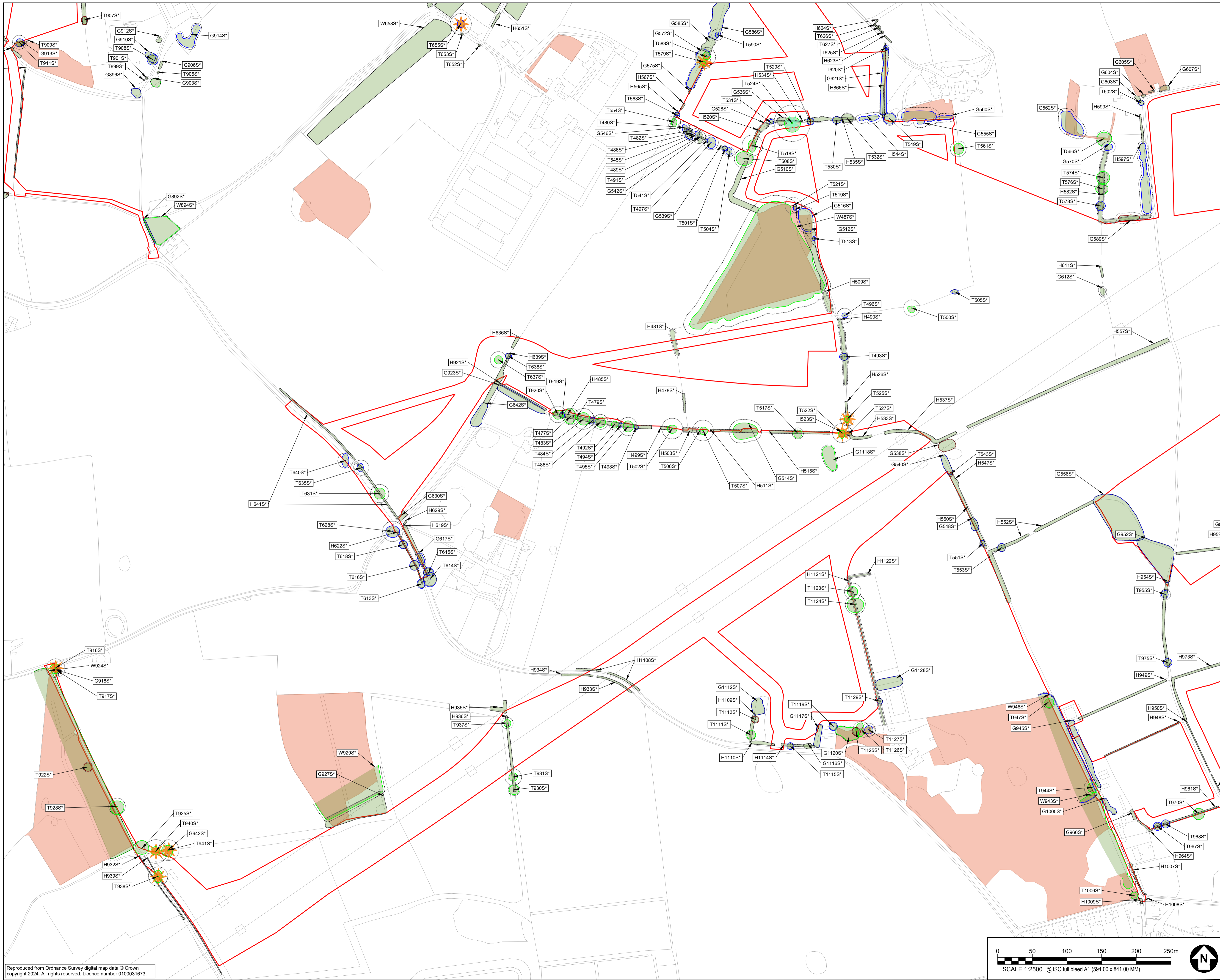
DRAWING STATUS

ISSUE

PROJECT NUMBER
60664038

SHEET TITLE
TREE PLANS
SUFFOLK SITE
(SHEET 02)

SHEET NUMBER **REV.**
60664038-ACM-XX-SK-AB-TCP-002 A VER 3



PROJECT

Sea Link (Suffolk)

CLIENT

National Grid

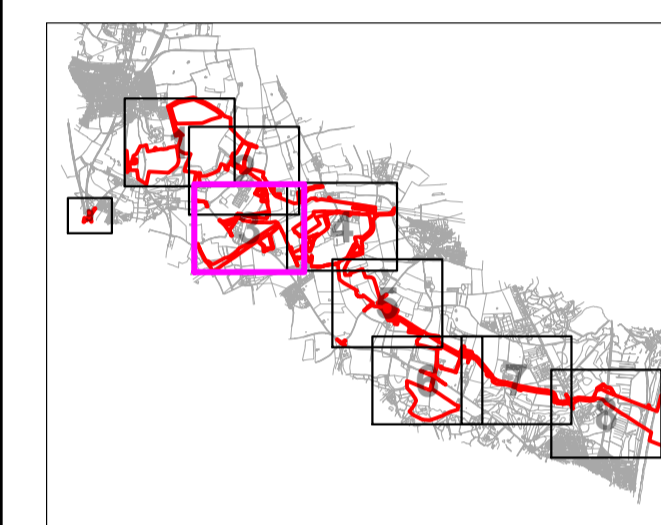
CONSULTANT

AECOM
Mid Point, Alencon Link,
Basingstoke, Hants,
RG21 7PP
Tel +44 (0) 1256 310 200
www.aecom.com

GENERAL NOTES

1. TREE CATEGORIES AS DEFINED BY BS 5837:2012
2. TREE LOCATIONS ARE BASED ON THE OS MAPPING, AERIAL IMAGERY, AND GPS CO-ORDINATES FROM ON SITE WALKOVER.
3. * INDICATES A TREE / GROUP WHOSE POSITION IS APPROXIMATE AS BASED UPON AERIAL PHOTOGRAPHY AND ON SITE OBSERVATIONS.
4. PLANS SHOULD BE READ IN CONJUNCTION WITH THE AECOM ARBORICULTURAL REPORT.
5. THE ORIGINAL OF THIS DRAWING WAS PRODUCED IN COLOUR - A MONOCHROME COPY SHOULD NOT BE RELIED UPON.
6. DRAWING REFERENCES:
LPA Searches.dwg
OSM Lines.dwg
Rev.C_Draft_Order_Limits.dwg

KEY PLAN



KEY

- ORDER LIMITS
- A CATEGORY TREE, GROUP, HEDGE, OR WOODLAND (HIGH QUALITY & VALUE)
- B CATEGORY TREE, GROUP, HEDGE, OR WOODLAND (MODERATE QUALITY & VALUE)
- C CATEGORY TREE, GROUP, HEDGE, OR WOODLAND (LOW QUALITY & VALUE)
- U CATEGORY TREE, GROUP, HEDGE, OR WOODLAND (UNSUITABLE FOR RETENTION)
- ROOT PROTECTION AREAS (RPA) (AS DEFINED BY BS 5837:2012)
- VETERAN TREE MARKER (INDICATES POSITION OF TREE OF VETERAN STATUS)
- ANCIENT TREE MARKER (INDICATES POSITION OF TREE OF ANCIENT STATUS)
- ANCIENT WOODLAND (W/15m BUFFER ZONE) (AREA CLASSIFIED AS AN ANCIENT WOODLAND)
- PRIORITY HABITAT (CONSIDERED AN AREA OF PRIORITY HABITAT)
- SSSI AREA (AREA CONTAINING SITE OF SPECIAL SCIENTIFIC INTEREST)
- NATURE RESERVE (AREA CLASSIFIED AS A LOCAL OR NATIONAL NATURE RESERVE)
- TREE PRESERVATION ORDER (AREA COVERED BY A TREE PRESERVATION ORDER (TPO))

ISSUE/REVISION

A V3	13.02.26	REVISION A (VERSION 3 CHANGE REQUEST)
A V2	14.11.25	REVISION A (VERSION 2 CHANGE REQUEST)
P06	08.01.25	TREE FEATURE AMENDMENTS
P04	12.12.24	SECOND ISSUE
P03	22.11.24	UPDATED RLB
P02	30.10.24	SURVEY UPDATE
P01	16.08.24	FIRST ISSUE
IR	DATE	DESCRIPTION

DRAWING STATUS

ISSUE

PROJECT NUMBER

60664038

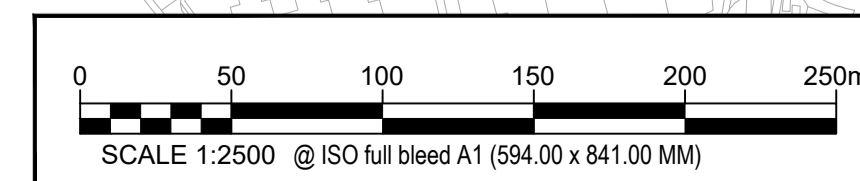
SHEET TITLE

TREE PLANS
SUFFOLK SITE
(SHEET 03)

SHEET NUMBER

60664038-ACM-XX-SK-AB-TCP-003 A VER 3

REV.



This drawing has been prepared for the use of AECOM's client. It may not be used, modified, reproduced or relied upon by third parties, except as agreed by AECOM or as required by law. AECOM accepts no responsibility, and denies any liability whatsoever, to any party that uses or relies on this drawing without AECOM's express written consent. Do not scale this document. All measurements must be obtained from the stated dimensions.

PROJECT

Sea Link (Suffolk)

CLIENT

National Grid

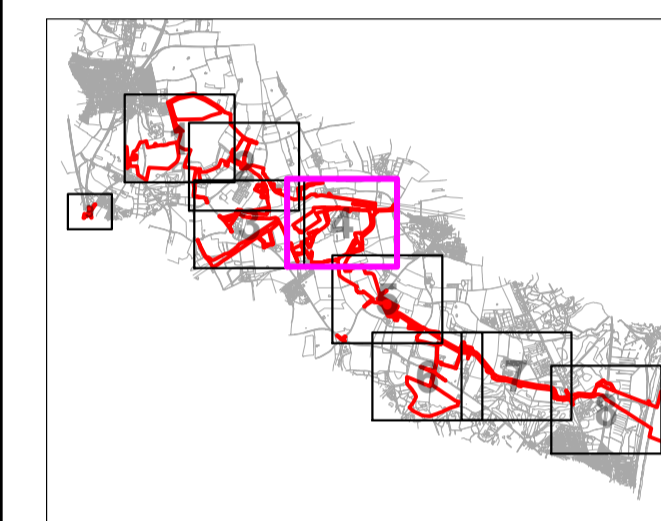
CONSULTANT

AECOM
Mid Point, Alencon Link,
Basingstoke, Hants,
RG21 7PP
Tel +44 (0) 1256 310 200
www.aecom.com

GENERAL NOTES

1. TREE CATEGORIES AS DEFINED BY BS 5837:2012
2. TREE LOCATIONS ARE BASED ON THE OS MAPPING, AERIAL IMAGERY, AND GPS CO-ORDINATES FROM ON SITE WALKOVER.
3. * INDICATES A TREE (GROUP) WHOSE POSITION IS APPROXIMATE AS BASED UPON AERIAL PHOTOGRAPHY AND ON SITE OBSERVATIONS.
4. PLANS SHOULD BE READ IN CONJUNCTION WITH THE AECOM ARBORICULTURAL REPORT.
5. THE ORIGINAL OF THIS DRAWING WAS PRODUCED IN COLOUR - A MONOCHROME COPY SHOULD NOT BE RELIED UPON.
6. DRAWING REFERENCES:
LPA Searches.dwg
OSIM Lines.dwg
Rev.C_Draft_Order_Limits.dwg

KEY PLAN



KEY

- ORDER LIMITS
- A CATEGORY TREE, GROUP, HEDGE, OR WOODLAND (HIGH QUALITY & VALUE)
- B CATEGORY TREE, GROUP, HEDGE, OR WOODLAND (MODERATE QUALITY & VALUE)
- C CATEGORY TREE, GROUP, HEDGE, OR WOODLAND (LOW QUALITY & VALUE)
- U CATEGORY TREE, GROUP, HEDGE, OR WOODLAND (UNSUITABLE FOR RETENTION)
- ROOT PROTECTION AREAS (RPA) (AS DEFINED BY BS 5837:2012)
- VETERAN TREE MARKER (INDICATES POSITION OF TREE OF VETERAN STATUS)
- ANCIENT TREE MARKER (INDICATES POSITION OF TREE OF ANCIENT STATUS)
- ANCIENT WOODLAND (W/15m BUFFER ZONE) (CONSIDERED AN AREA OF PRIORITY HABITAT)
- PRIORITY HABITAT (CONSIDERED AN AREA OF PRIORITY HABITAT)
- SSSI AREA (AREAS CONTAINING SITES OF SPECIAL SCIENTIFIC INTEREST)
- NATURE RESERVE (AREA CLASSIFIED AS A LOCAL OR NATIONAL NATURE RESERVE)
- TREE PRESERVATION ORDER (AREA COVERED BY A TREE PRESERVATION ORDER (TPO))

ISSUE/REVISION

IR	DATE	DESCRIPTION
A V3	13.02.26	REVISION A (VERSION 3 CHANGE REQUEST)
A V2	14.11.25	REVISION A (VERSION 2 CHANGE REQUEST)
P05	08.01.25	TREE FEATURE AMENDMENTS
P04	12.12.24	SECOND ISSUE
P03	22.11.24	UPDATED RLB
P02	30.10.24	SURVEY UPDATE
P01	16.08.24	FIRST ISSUE

DRAWING STATUS

ISSUE

PROJECT NUMBER

60664038

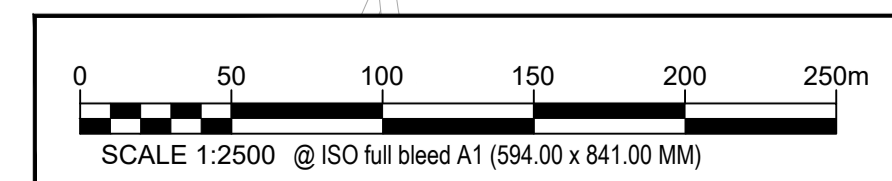
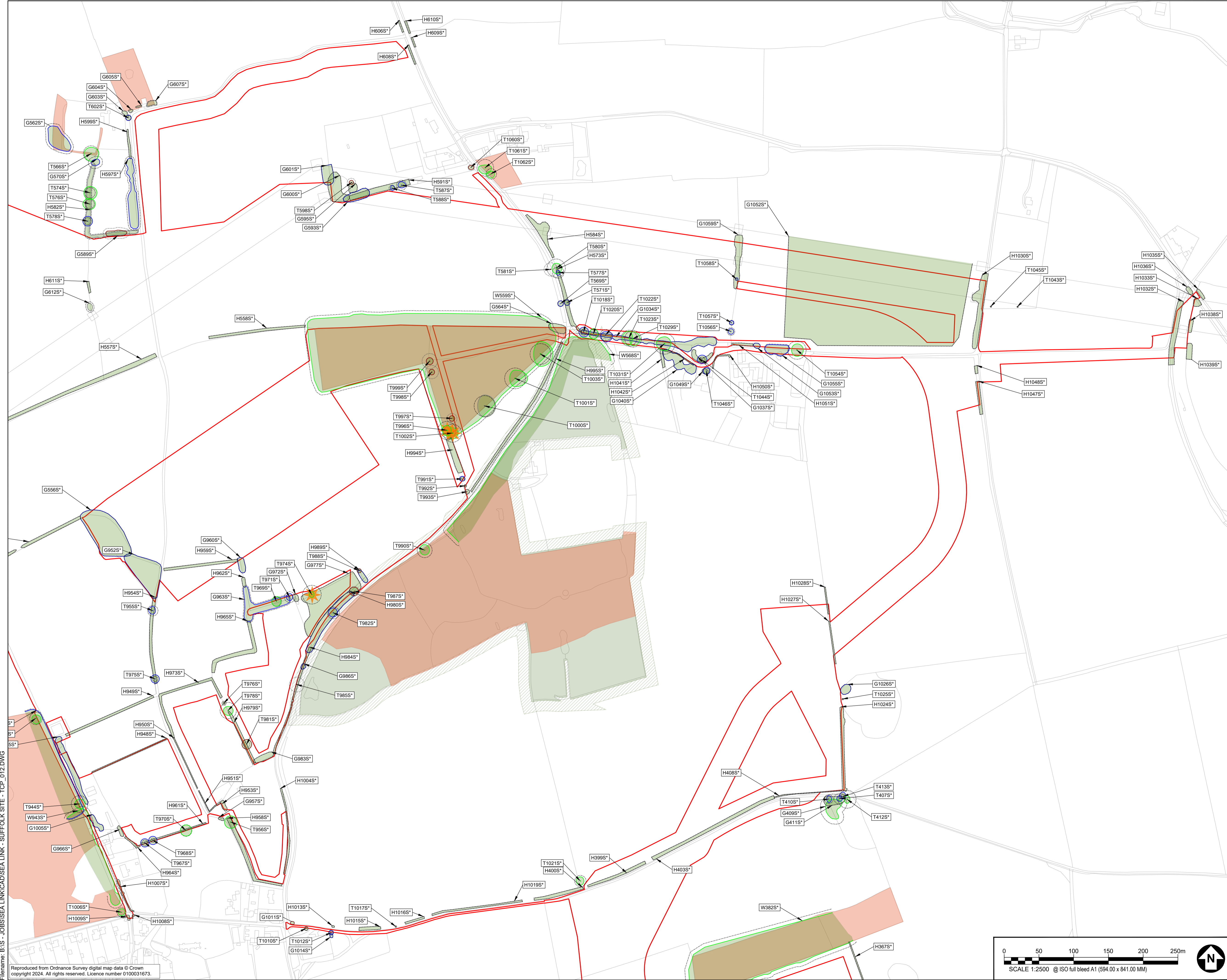
SHEET TITLE

TREE PLANS
SUFFOLK SITE
(SHEET 04)

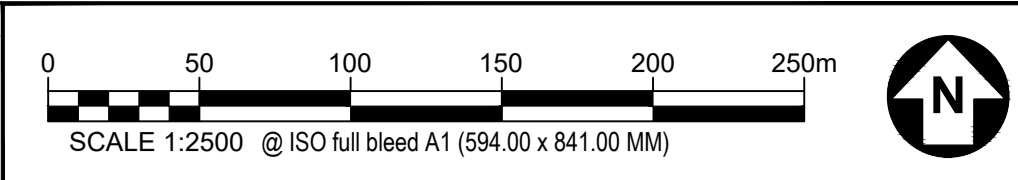
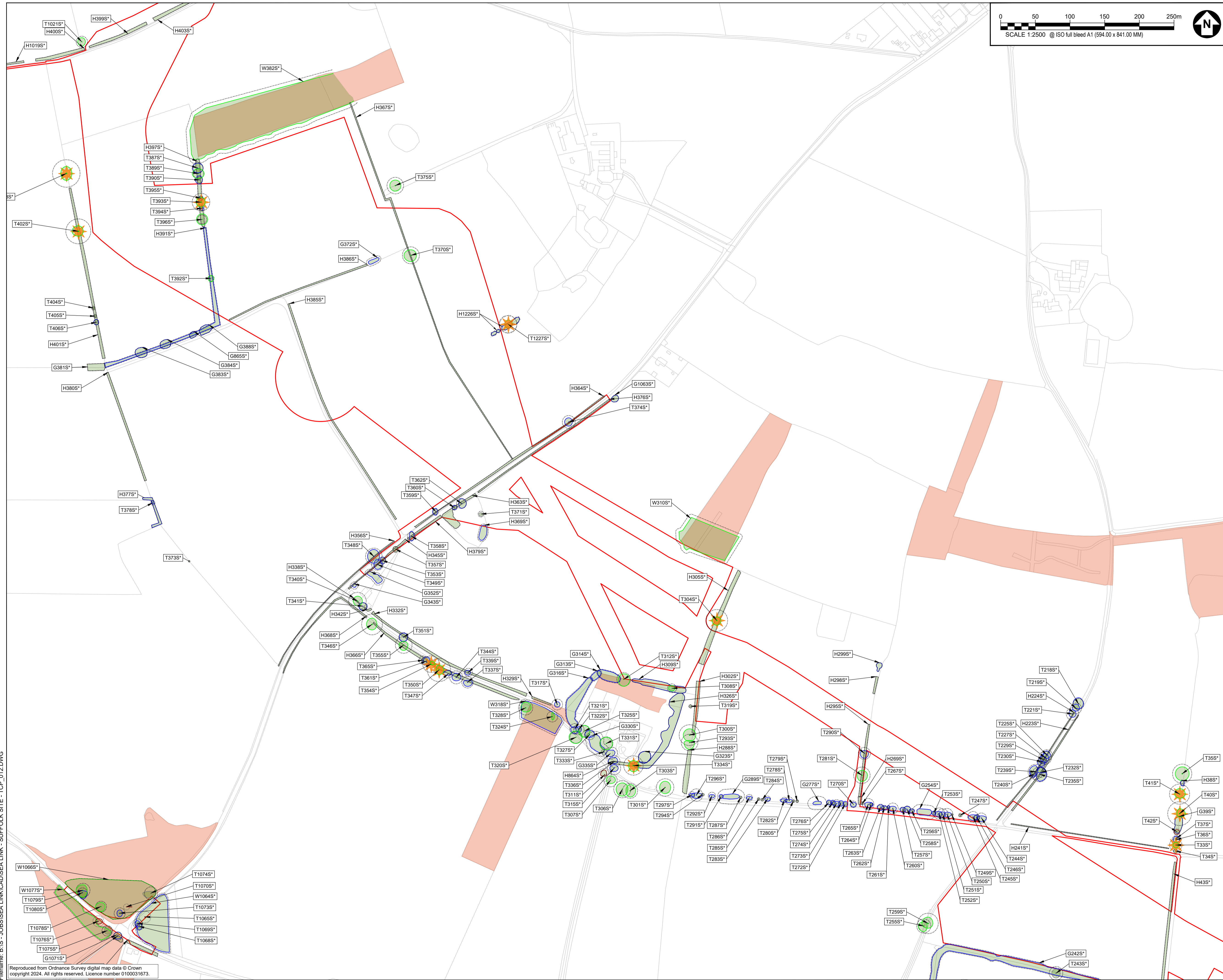
SHEET NUMBER

60664038-ACM-XX-SK-AB-TCP-004 A VER 3

REV.



This drawing has been prepared for the use of AECOM's client. It may not be used, modified, reproduced or relied upon by third parties, except as agreed by AECOM or as required by law. AECOM accepts no responsibility, and denies any liability whatsoever, to any party that uses or relies on this drawing without AECOM's express written consent. Do not scale this document. All measurements must be obtained from the stated dimensions.



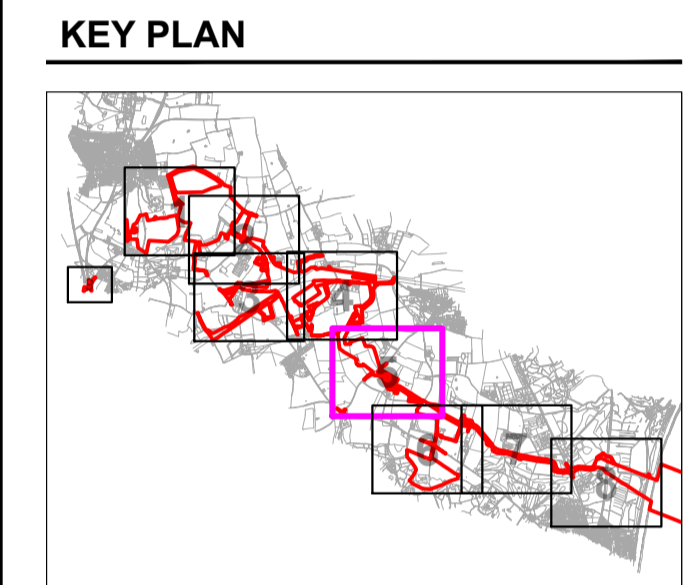
PROJECT
Sea Link (Suffolk)

CLIENT
National Grid

CONSULTANT
AECOM
Mid Point, Alencon Link,
Basingstoke, Hants,
RG21 7PP
Tel +44 (0) 1256 310 200
www.aecom.com

GENERAL NOTES

- TREE CATEGORIES AS DEFINED BY BS 5837:2012
- TREE LOCATIONS ARE BASED ON THE OS MAPPING, AERIAL IMAGERY, AND GPS CO-ORDINATES FROM ON SITE WALKOVER.
- * INDICATES A TREE / GROUP WHOSE POSITION IS APPROXIMATE AS BASED UPON AERIAL PHOTOGRAPHY AND ON SITE OBSERVATIONS.
- PLANS SHOULD BE READ IN CONJUNCTION WITH THE AECOM ARBORICULTURAL REPORT.
- THE ORIGINAL OF THIS DRAWING WAS PRODUCED IN COLOUR - A MONOCHROME COPY SHOULD NOT BE RELIED UPON.
- DRAWING REFERENCES:
LPA Searches.dwg
OSMM Lines.dwg
RevC_Draft_Order_Limits.dwg



- KEY**
- ORDER LIMITS
 - A CATEGORY TREE, GROUP, HEDGE, OR WOODLAND (HIGH QUALITY & VALUE)
 - B CATEGORY TREE, GROUP, HEDGE, OR WOODLAND (MODERATE QUALITY & VALUE)
 - C CATEGORY TREE, GROUP, HEDGE, OR WOODLAND (LOW QUALITY & VALUE)
 - U CATEGORY TREE, GROUP, HEDGE, OR WOODLAND (UNSUITABLE FOR RETENTION)
 - ROOT PROTECTION AREAS (RPA) (AS DEFINED BY BS 5837:2012)
 - VETERAN TREE MARKER (INDICATES POSITION OF TREE OF VETERAN STATUS)
 - ANCIENT TREE MARKER (INDICATES POSITION OF TREE OF ANCIENT STATUS)
 - ANCIENT WOODLAND (W/15m BUFFER ZONE) (CONSIDERED AN AREA OF PRIORITY HABITAT)
 - PRIORITY HABITAT (CONSIDERED AN AREA OF PRIORITY HABITAT)
 - SSSI AREA (AREAS CONTAINING SITE OF SPECIAL SCIENTIFIC INTEREST)
 - NATURE RESERVE (AREA CLASSIFIED AS A LOCAL OR NATIONAL NATURE RESERVE)
 - TREE PRESERVATION ORDER (AREA COVERED BY A TREE PRESERVATION ORDER (TPO))

ISSUE/REVISION

A V3	13.02.26	REVISION A (VERSION 3 CHANGE REQUEST)
A V2	14.11.25	REVISION A (VERSION 2 CHANGE REQUEST)
P05	08.01.25	TREE FEATURE AMENDMENTS
P04	12.12.24	SECOND ISSUE
P03	22.11.24	UPDATED RLB
P02	30.10.24	SURVEY UPDATE
P01	16.08.24	FIRST ISSUE
LR	DATE	DESCRIPTION

DRAWING STATUS

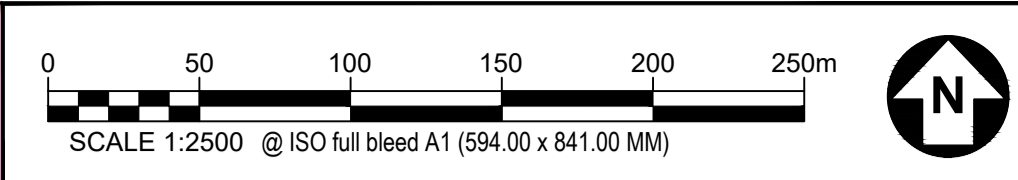
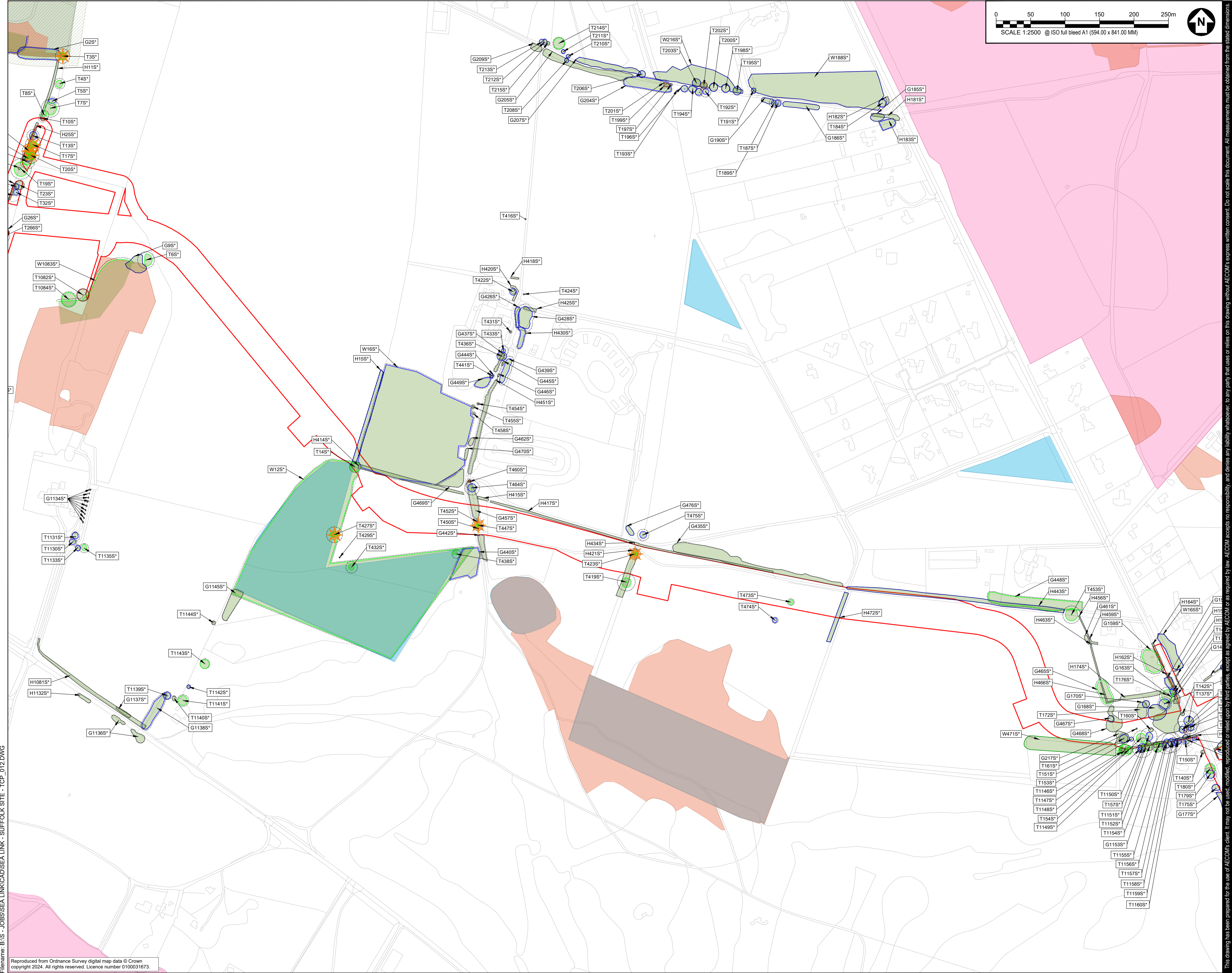
ISSUE

PROJECT NUMBER
60664038

SHEET TITLE
TREE PLANS
SUFFOLK SITE
(SHEET 05)

SHEET NUMBER **REV.**
60664038-ACM-XX-SK-AB-TCP-005 A VER 3

This drawing has been prepared for the use of AECOM's client. It may not be used, modified, reproduced or relied upon by third parties, except as agreed by AECOM or as required by law. AECOM accepts no responsibility, and denies any liability whatsoever, to any party that uses or relies on this drawing without AECOM's express written consent. Do not scale this document. All measurements must be obtained from the stated dimensions.



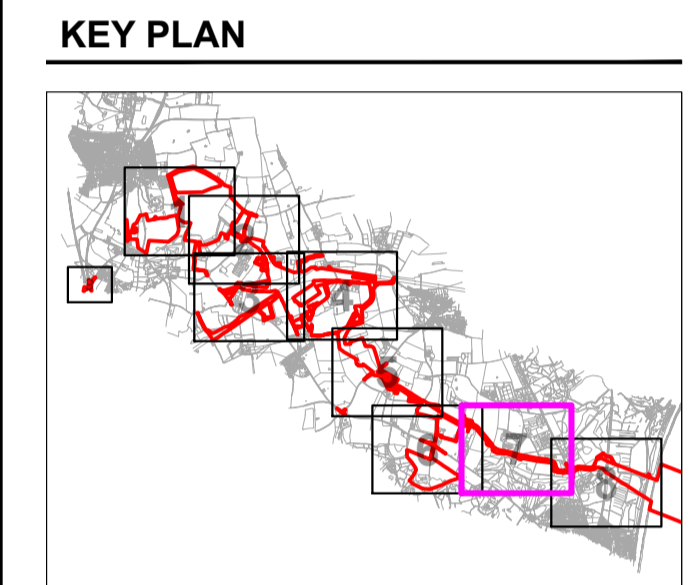
PROJECT
Sea Link (Suffolk)

CLIENT
National Grid

CONSULTANT
AECOM
Mid Point, Alencon Link,
Basingstoke, Hants,
RG21 7PP
Tel +44 (0) 1256 310 200
www.aecom.com

GENERAL NOTES

1. TREE CATEGORIES AS DEFINED BY BS 5837:2012
2. TREE LOCATIONS ARE BASED ON THE OS MAPPING, AERIAL IMAGERY, AND GPS CO-ORDINATES FROM ON SITE WALKOVER.
3. * INDICATES A TREE / GROUP WHOSE POSITION IS APPROXIMATE AS BASED UPON AERIAL PHOTOGRAPHY AND ON SITE OBSERVATIONS. ARBORICULTURAL REPORT.
4. PLANS SHOULD BE READ IN CONJUNCTION WITH THE AECOM ARBORICULTURAL REPORT.
5. THE ORIGINAL OF THIS DRAWING WAS PRODUCED IN COLOUR - A MONOCHROME COPY SHOULD NOT BE RELIED UPON.
6. DRAWING REFERENCES:
LPA Searches.dwg
OSIM Lines.dwg
RevC_Draft_Order_Limits.dwg



KEY

- ORDER LIMITS
- A CATEGORY TREE, GROUP, HEDGE, OR WOODLAND (HIGH QUALITY & VALUE)
- B CATEGORY TREE, GROUP, HEDGE, OR WOODLAND (MODERATE QUALITY & VALUE)
- C CATEGORY TREE, GROUP, HEDGE, OR WOODLAND (LOW QUALITY & VALUE)
- U CATEGORY TREE, GROUP, HEDGE, OR WOODLAND (UNSUITABLE FOR RETENTION)
- ROOT PROTECTION AREAS (RPA) (AS DEFINED BY BS 5837:2012)
- VETERAN TREE MARKER (INDICATES POSITION OF TREE OF VETERAN STATUS)
- ANCIENT TREE MARKER (INDICATES POSITION OF TREE OF ANCIENT STATUS)
- ANCIENT WOODLAND (W/15m BUFFER ZONE) (AREA CLASSIFIED AS AN ANCIENT WOODLAND)
- PRIORITY HABITAT (CONSIDERED AN AREA OF PRIORITY HABITAT)
- SSSI AREA (AREA CONTAINING SITE OF SPECIAL SCIENTIFIC INTEREST)
- NATURE RESERVE (AREA CLASSIFIED AS A LOCAL OR NATIONAL NATURE RESERVE)
- TREE PRESERVATION ORDER (AREA COVERED BY A TREE PRESERVATION ORDER (TPO))

ISSUE/REVISION

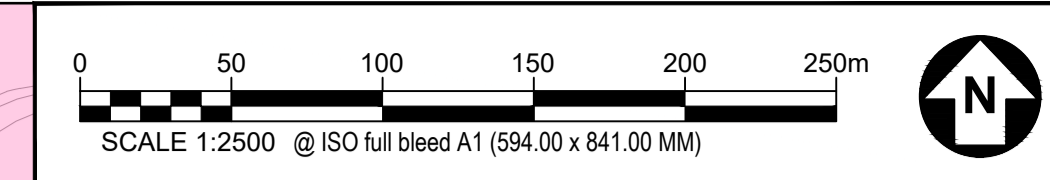
NO	DATE	DESCRIPTION
A V3	13.02.26	REVISION A (VERSION 3 CHANGE REQUEST)
A V2	14.11.25	REVISION A (VERSION 2 CHANGE REQUEST)
P06	08.01.25	TREE FEATURE AMENDMENTS
P04	12.12.24	SECOND ISSUE
P03	22.11.24	UPDATED RLB
P02	30.10.24	SURVEY UPDATE
P01	16.08.24	FIRST ISSUE

DRAWING STATUS
ISSUE

PROJECT NUMBER
60664038

SHEET TITLE
TREE PLANS
SUFFOLK SITE
(SHEET 07)

SHEET NUMBER **REV.**
60664038-ACM-XX-SK-AB-TCP-007 A VER 3



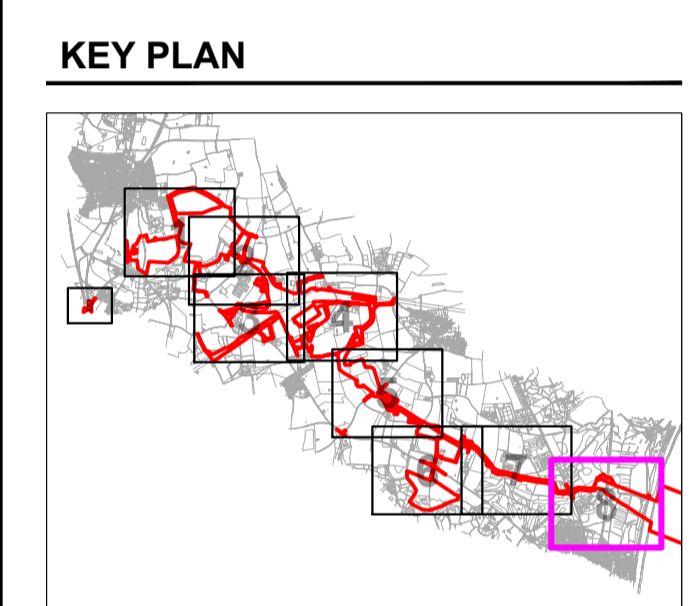
PROJECT
Sea Link (Suffolk)

CLIENT
National Grid

CONSULTANT
AECOM
Mid Point, Alencon Link,
Basingstoke, Hants,
RG21 7PP
Tel +44 (0) 1256 310 200
www.aecom.com

GENERAL NOTES

1. TREE CATEGORIES AS DEFINED BY BS 5837:2012
2. TREE LOCATIONS ARE BASED ON THE OS MAPPING, AERIAL IMAGERY, AND GPS CO-ORDINATES FROM ON SITE WALKOVER.
3. * INDICATES A TREE / GROUP WHOSE POSITION IS APPROXIMATE AS BASED UPON AERIAL PHOTOGRAPHY AND ON SITE OBSERVATIONS.
4. PLANS SHOULD BE READ IN CONJUNCTION WITH THE AECOM ARBORICULTURAL REPORT.
5. THE ORIGINAL OF THIS DRAWING WAS PRODUCED IN COLOUR - A MONOCHROME COPY SHOULD NOT BE RELIED UPON.
6. DRAWING REFERENCES:
LPA Searches.dwg
OSIM Lines.dwg
Rev.C_Draft_Order_Limits.dwg



KEY

- ORDER LIMITS
- A CATEGORY TREE, GROUP, HEDGE, OR WOODLAND (HIGH QUALITY & VALUE)
- B CATEGORY TREE, GROUP, HEDGE, OR WOODLAND (MODERATE QUALITY & VALUE)
- C CATEGORY TREE, GROUP, HEDGE, OR WOODLAND (LOW QUALITY & VALUE)
- U CATEGORY TREE, GROUP, HEDGE, OR WOODLAND (UNSUITABLE FOR RETENTION)
- ROOT PROTECTION AREAS (RPA) (AS DEFINED BY BS 5837:2012)
- VETERAN TREE MARKER (INDICATES POSITION OF TREE OF VETERAN STATUS)
- ANCIENT TREE MARKER (INDICATES POSITION OF TREE OF ANCIENT STATUS)
- ANCIENT WOODLAND (W/15m BUFFER ZONE)
- PRIORITY HABITAT (CONSIDERED AN AREA OF PRIORITY HABITAT)
- SSSI AREA (AREAS CONTAINING SITES OF SPECIAL SCIENTIFIC INTEREST)
- NATURE RESERVE (AREA CLASSIFIED AS A LOCAL OR NATIONAL NATURE RESERVE)
- TREE PRESERVATION ORDER (AREA COVERED BY A TREE PRESERVATION ORDER (TPO))

ISSUE/REVISION

REV	DATE	DESCRIPTION
A V3	13.02.26	REVISION A (VERSION 3 CHANGE REQUEST)
A V2	14.11.25	REVISION A (VERSION 2 CHANGE REQUEST)
P05	08.01.25	TREE FEATURE AMENDMENTS
P04	12.12.24	SECOND ISSUE
P03	22.11.24	UPDATED RLB
P02	30.10.24	SURVEY UPDATE
P01	16.08.24	FIRST ISSUE

IR DATE DESCRIPTION

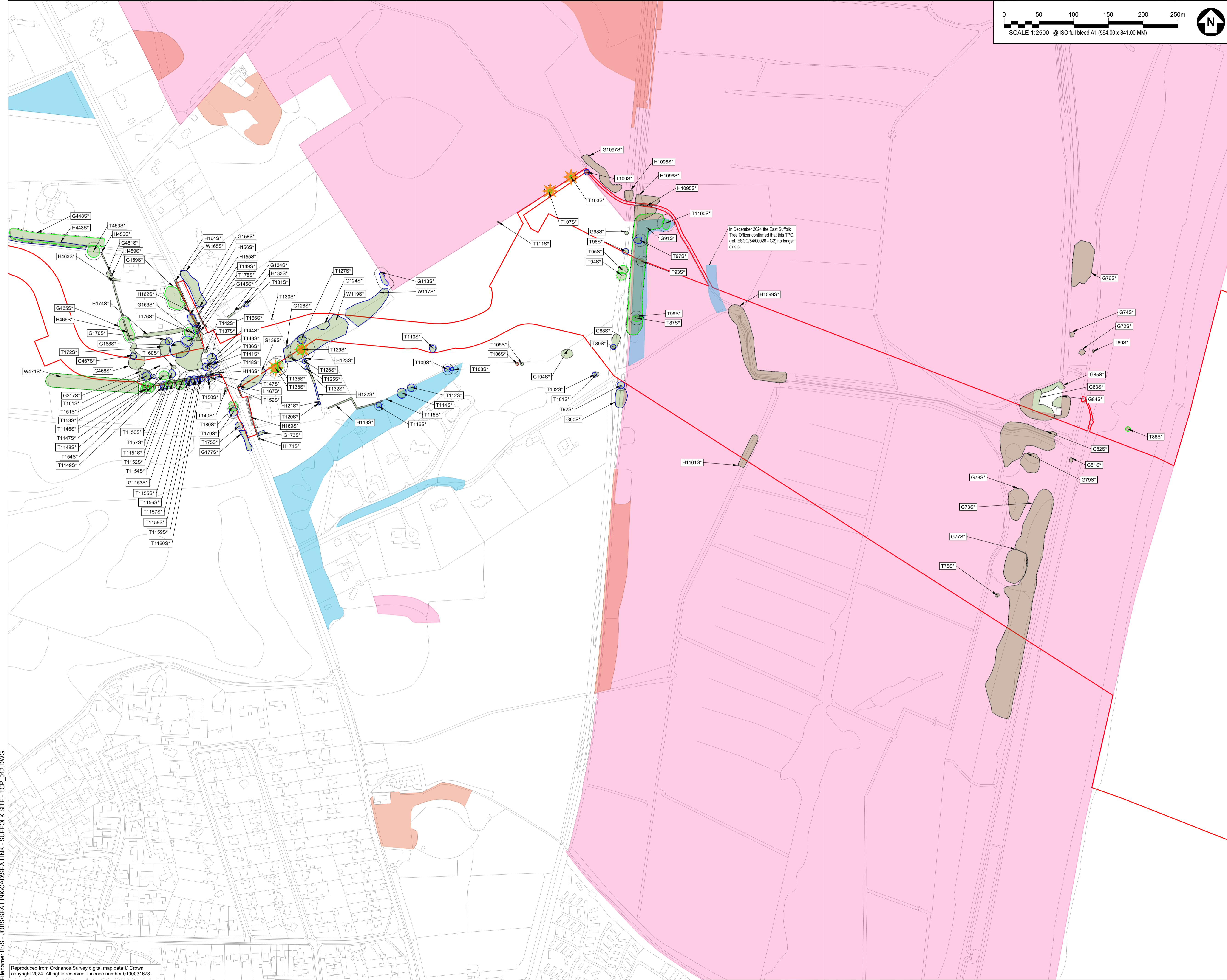
DRAWING STATUS

ISSUE

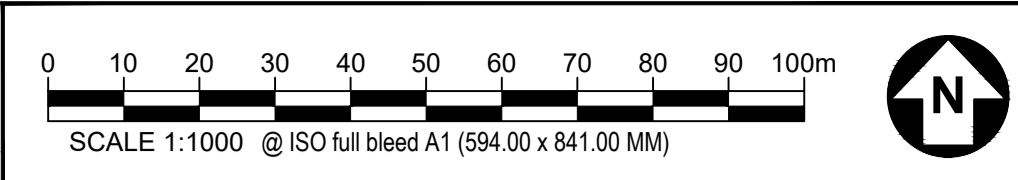
PROJECT NUMBER
60664038

SHEET TITLE
TREE PLANS
SUFFOLK SITE
(SHEET 08)

SHEET NUMBER **REV.**
60664038-ACM-XX-SK-AB-TCP-008 A VER 3



This drawing has been prepared for the use of AECOM's client. It may not be used, modified, reproduced or relied upon by third parties, except as agreed by AECOM or as required by law. AECOM accepts no responsibility, and denies any liability whatsoever, to any party that uses or relies on this drawing without AECOM's express written consent. Do not scale this document. All measurements must be obtained from the stated dimensions.



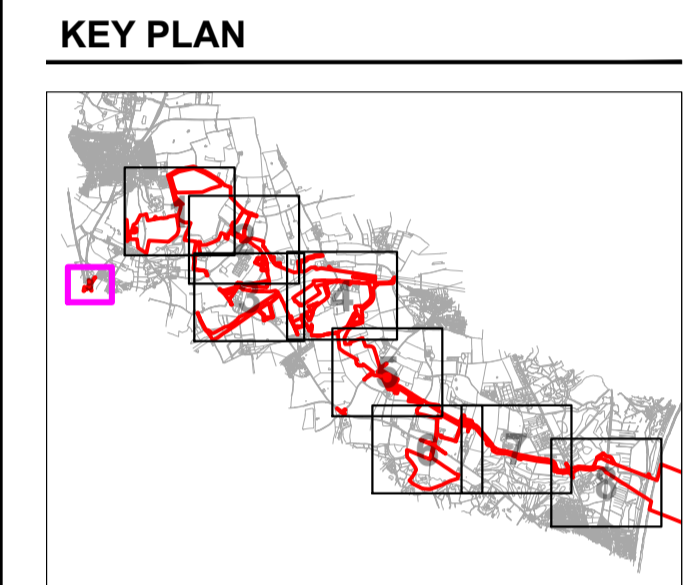
PROJECT
 Sea Link (Suffolk)

CLIENT
 National Grid

CONSULTANT
 AECOM
 Mid Point, Alencon Link,
 Basingstoke, Hants,
 RG21 7PP
 Tel +44 (0) 1256 310 200
 www.aecom.com

GENERAL NOTES

- TREE CATEGORIES AS DEFINED BY BS 5837:2012
- TREE LOCATIONS ARE BASED ON THE OS MAPPING, AERIAL IMAGERY, AND GPS CO-ORDINATES FROM ON SITE WALKOVER.
- * INDICATES A TREE / GROUP WHOSE POSITION IS APPROXIMATE AS BASED UPON AERIAL PHOTOGRAPHY AND ON SITE OBSERVATIONS.
- PLANS SHOULD BE READ IN CONJUNCTION WITH THE AECOM ARBORICULTURAL REPORT.
- THE ORIGINAL OF THIS DRAWING WAS PRODUCED IN COLOUR - A MONOCHROME COPY SHOULD NOT BE RELIED UPON.
- DRAWING REFERENCES:
 LPA Searches.dwg
 OSIM Lines.dwg
 RevC_Draft_Order_Limits.dwg



KEY

- ORDER LIMITS**
- A CATEGORY TREE, GROUP, HEDGE, OR WOODLAND** (HIGH QUALITY & VALUE)
- B CATEGORY TREE, GROUP, HEDGE, OR WOODLAND** (MODERATE QUALITY & VALUE)
- C CATEGORY TREE, GROUP, HEDGE, OR WOODLAND** (LOW QUALITY & VALUE)
- U CATEGORY TREE, GROUP, HEDGE, OR WOODLAND** (UNSUITABLE FOR RETENTION)
- ROOT PROTECTION AREAS (RPA)** (AS DEFINED BY BS 5837:2012)
- VETERAN TREE MARKER** (INDICATES POSITION OF TREE OF VETERAN STATUS)
- ANCIENT TREE MARKER** (INDICATES POSITION OF TREE OF ANCIENT STATUS)
- ANCIENT WOODLAND (W115m BUFFER ZONE)** (AREA CLASSIFIED AS AN ANCIENT WOODLAND)
- PRIORITY HABITAT** (CONSIDERED AN AREA OF PRIORITY HABITAT)
- SSSI AREA** (AREA CONTAINING SITE OF SPECIAL SCIENTIFIC INTEREST)
- NATURE RESERVE** (AREA CLASSIFIED AS A LOCAL OR NATIONAL NATURE RESERVE)
- TREE PRESERVATION ORDER** (AREA COVERED BY A TREE PRESERVATION ORDER (TPO))

ISSUE/REVISION

NO	DATE	DESCRIPTION
A V3	13.02.26	REVISION A (VERSION 3 CHANGE REQUEST)
A V2	14.11.25	REVISION A (VERSION 2 CHANGE REQUEST)
P05	08.01.25	TREE FEATURE AMENDMENTS
P04	12.12.24	SECOND ISSUE
P03	22.11.24	UPDATED RLB
P02	30.10.24	SURVEY UPDATE
P01	16.08.24	FIRST ISSUE

DRAWING STATUS

ISSUE

PROJECT NUMBER
 60664038

SHEET TITLE
 TREE PLANS
 SUFFOLK SITE
 (SHEET 09)

SHEET NUMBER **REV.**
 60664038-ACM-XX-SK-AB-TCP-009 A VER 3

This drawing has been prepared for the use of AECOM's client. It may not be used, modified, reproduced or relied upon by third parties, except as agreed by AECOM or as required by law. AECOM accepts no responsibility, and denies any liability whatsoever, to any party that uses or relies on this drawing without AECOM's express written consent. Do not scale this document. All measurements must be obtained from the stated dimensions.

National Grid plc
National Grid House,
Warwick Technology Park,
Gallows Hill, Warwick.
CV34 6DA United Kingdom

Registered in England and Wales
No. 4031152
nationalgrid.com